

Todus



PURO COLLECTION



PURO COLLECTION
ARMCHAIR BY
ALEXANDER GUFLER



PURO ARMCHAIR
[56 x 54 x 87 cm]



PURO TABLE
[90 x 90 x 74 cm]
[100 x 100 x 74 cm]
[150 x 150 x 74 cm]



PURO
EXTENDABLE TABLE
[90 x 160/230 x 74 cm]
[100 x 160/240 x 74 cm]



MATERIALS

STAINLESS STEEL
FRAMES



BRUSHED
105

POWDER COATED STAINLESS STEEL FRAMES

100% polyester is used for powder coating.



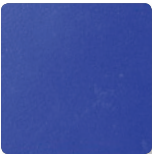
WHITE
110



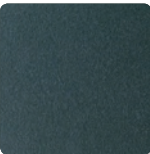
GREY
105



ANTHRACITE
145



BLUE
175



DARK GREEN
180

FABRIC FOR CHAIRS

Batylne is a technical fabric developed especially for outdoor use. It has exceptional tear strength, UV radiation resistance and dries very quickly.



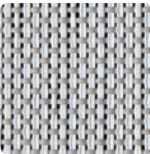
WHITE
510



BROWN/WHITE
525



GREY
535



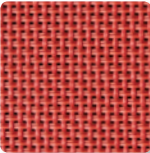
WHITE/GREY
540



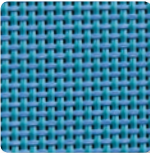
ANTHRACITE
545



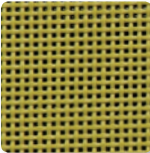
BLACK
550



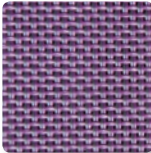
RED
570



BLUE
575



GREEN
580



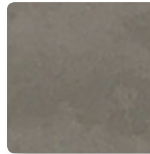
VIOLET
585

HPL TABLE TOPS

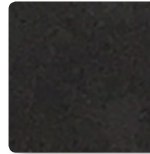
High pressure laminate (HPL) is a flat thermo hardening resin-based sheet. It is reinforced with wood-based fibers and manufactured at high pressure and temperature.



WHITE
310



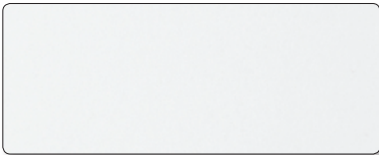
GREY
335



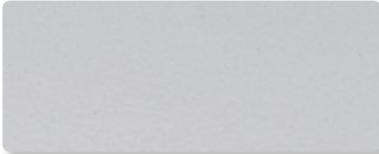
DARK GREY
336

CERAMIC TABLE TOPS

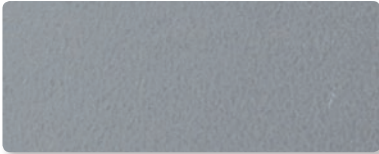
Ceramic is a 100% natural product. It does not contain any organic pigments and is thus resistant to UV rays, so it's perfectly colour stable. Ceramic as a material is highly abrasion resistant.



WHITE
210



PEARL
212



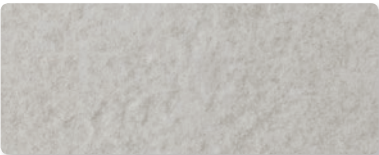
FUME
214



ANTHRACITE STONE
217



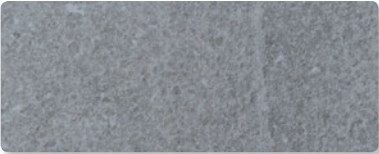
OXIDO BLACK
218



STONE IVORY
211



PEARL STONE
213



GREY STONE
215



BLACK
216

